

GLENSIDE

Fire Protection District

*Proudly serving Glendale Heights
and Glen Ellyn Countryside*



The Glenside Fire Protection District is dedicated to preserving the quality of life and property of our residents and businesses by providing diverse, high quality services that answer the needs of our community. We will participate actively in the community through education and prevention, serving as a role model that is identifiable, accountable and one that lets the community know

"We're there and we care"

Annual Report 2014





Glenside Fire District 2014

Our Mission Statement

The Glenside Fire Protection District is dedicated to preserving the quality of life and property of our residents and businesses by providing diverse, high quality services that answer the needs of our community. We will participate actively in the community through education and prevention, serving as a role model that is identifiable, accountable, and one that lets the community know:

“We’re There and We Care”



Annual Report 2014

The members of the Glenside Fire Protection District take great pride in providing the residents and visitors of the District with quality cost effective care each and every day. Glenside personnel saw an 18% increase in requests for emergency service in 2014 versus 2013.

The district responded to 2,366 requests for service in 2014 with 67% being for Emergency Medical Services (down 2% from 2013). Our Paramedics and Emergency Medical Technicians had contact with 1,421 patients and provided advanced life support care to 686 of them.

We are pleased to report that there were no fire fatalities in the Glenside Fire Protection District in 2014. The district saw a 99.7% dollar value save in fire loss in 2014. The fire loss in 2013 was \$355,107, while in comparison 2014 saw a fire loss of \$398,425.

The majority of this loss came from one residential, one vehicle and one industrial fire.



The Glenside Fire Protection District's 45th Anniversary

The Glenside Fire Protection District was created in June of 1969 through a referendum approved by the voters of the Glen Ellyn Countryside unincorporated area and the voters of the Village of Glendale Heights. In October of 1970 a new fire station was dedicated to house 6 pieces of fire equipment and provided a training room and living areas for the firefighters. In 1984 there was an addition of two long apparatus bays on the west side of the original building and in 1994 a two phase renovation project was started. The first phase, the renovation of the apparatus bays and the underground fuel storage tanks was completed during 1994. However, the second phase, the demolition of the meeting room and living areas of the original building and the construction of new living areas and administrative offices had to wait for funding. In March of 2002 the residents of the Glenside Fire Protection District voted to approve a 3 million bond issue to renovate the 32 year old fire station. On July 31, 2004 the dedication of the renovated fire station was opened to the citizens for their inspection. The building which was funded by the citizens is expected to serve the community for the next century. Each day, 24 hours a day, a minimum of five persons are on duty to respond to a variety of emergency incidents. Monday thru Friday from 8AM until 4:30PM an administrative staff of five additional personnel are on duty. Fire Chief Russell Wood and Deputy Chief James Reid manage the daily operations. Three trustees, Nick Kosiara, Sharon Christopher, and Richard Osborn, are elected by the citizens of the fire district to administer the funds and set policies. The District is a multi-million dollar operation protecting 34,000 citizens in the community 24 hours each day 365 days each year. A commemorative 45th anniversary challenge coin was given to each employee, challenging them to "continue to strive for more."



Incidents and Fire Loss



Scaffolding issues due to high winds at a new construction site in Glendale Heights on Schmale

Backyard structure fire in May, 2014 (below)



Mutual Aid to a Bloomingdale Fire in May, 2014 (right)



Incidents and Fire Loss



Fire alarm activated. On April 30, 2014 Engine 58 and Medic 59 were dispatched to a fire alarm that was for a water main break at a business in Glendale Heights.

There was a flipped car in the industrial area of Glendale Heights after the vehicle struck a boulder (below).



There was a car fire on April, 2014 in the unincorporated Glen Ellyn area and another on May 7 in Glendale Heights (above).

Weather Challenges Lead to Incidents

Weather has always been a challenge to firefighters, especially the winter months. In 2014 we once again had our share of extreme weather, from summer storms to record breaking snow falls.



**High winds and extreme drop in temperatures brought an early winter to the area
November, 2014**

**Summer storms - North
Ave and Bloomingdale
Road
July, 2014**



Weather Challenges Lead to Incidents



Quick thaws and cold, freezing temperatures lead to iced over power boxes

January, 2014

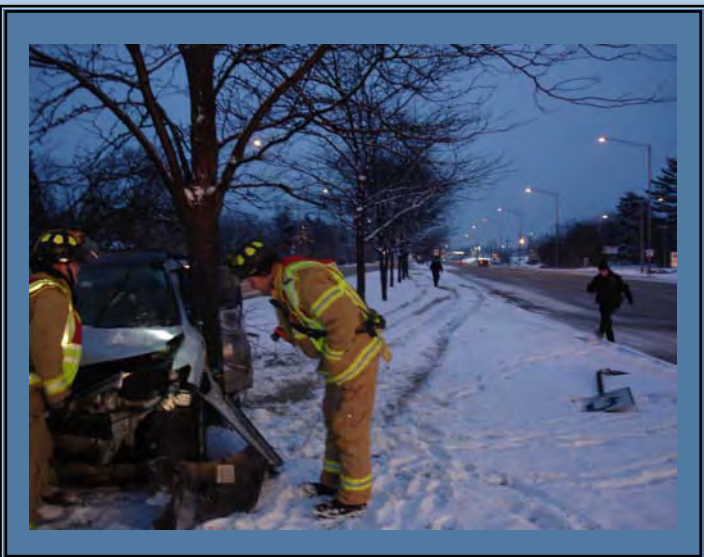
Broken pipes are a cause that lead to water damage in homes and businesses

January, 2014



Icy roads and black ice lead to car accidents and cars vs. trees incidents

January, 2014



Station Projects

Out with the Old...In with the New!

Several large projects were undertaken during the 2014 calendar year. The installation of new fuel tanks on the South side of the building for our apparatus, including two new underground storage tanks holding gasoline and diesel were installed to replace the original tanks put in circa 1972. Concrete work in the parking lot and on the South side apron was also completed.



Station Projects

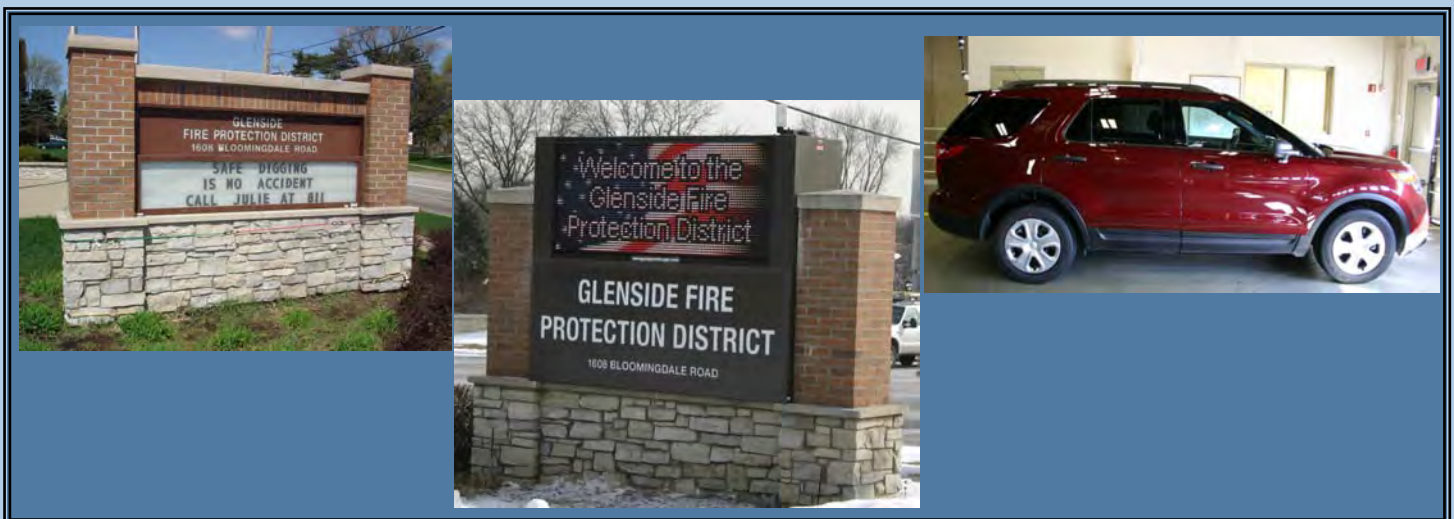
Exhaust Removal System & Power Stair Chairs

A brand new exhaust removal system was installed in the apparatus bays of the station through means of a FEMA (Federal Emergency Management Agency) grant. The entire apparatus bay area and adjoining rooms were also painted before the system was installed. Safety grant money from the Illinois Public Risk Fund Safety Grant 2014 was used to purchase a power stair chair for one of the ambulances to assist paramedics with patients up to 500 pounds. A second chair was also purchased to mirror the equipment on the second ambulance.



Upgrade to the Marquee Sign and New Fire Chief Vehicle

In cooperation with the Foreign Fire Insurance Board, the District moved forward with upgrading the marquee sign from manual to computerized. The project was started in 2014 and completed in early February, 2015. A new Fire Chief vehicle was purchased in late 2014 moving the Chief's previous car to the Fire Prevention Bureau.



Training & Certifications for 2014

Outside Training Classes

Training evolutions were completed at the burn tower through the cooperation of the Addison Fire Protection District in April, 2014.

Fire Safety Training



Hazmat Tech A Drill Exercise

On May 16, 2014 the District hosted a Hazardous Materials Tech A certification course. This certification was organized by Training Officer Chris Cavanaugh.



Training & Certifications for 2014

Technology Center of DuPage (TCD)



Glenside's Engine was used for live fire training by the Technology Center of DuPage's Fire Program in May, 2014. If you look closely in the first picture you will also see that several personal protective equipment (PPE), that was also donated to the program, is being worn by students.

Training & Certifications for 2014

OSFM Certificates

Fire Officer I (Provisional)

Kyle Lipponeur and Michael Pacie, Jr.

Hazardous Materials — Tech A

Thomas Buyle, Jeremy Durbin, Scot Isaac Evans, Jeffery Hammond,

Michael Pacie, Jr., Joseph Taylor and David Zielinski

Rope Operations

Gregory Ostrand and Joseph Taylor

Fire Service Vehicle Operator

Thomas Buyle, Christopher Barnes and Landon Starkey

Fire Apparatus Engineer

Louis DiGioia, Jacob Errington, Justin Hinz, Richard Jefferson,

Natalino Novielli, Joan Pittman and Landon Starkey

Instructor I

Brian Hauser, Jr.



Electrical Training on Drill Night - December 10th.

Hazmat Tech A Training - May 16, 2014.



Training & Certifications for 2014

OSFM and NIMS Certificates



HazMat Training on Drill Night in the station on December 3rd.

Fire Investigator (Recertification)

Michael DeLillo

Hazardous Materials Operations

Nicholas Bojovic, Jonathan Drummer, Daniel Gomez, Gregory Gravina, Ryan Marshall and
Gregory Ostrand

Firefighter II (Basic Operations Firefighter)

Nicholas Bojovic, Jonathan Drummer, Daniel Gomez, Gregory Gravina and Gregory Ostrand

Technical Rescue Awareness

Nicholas Bojovic, Jonathan Drummer, Daniel Gomez, Gregory Gravina and Gregory Ostrand

Personnel - New Employees With The District

Swearing-in of Firefighter Kyle Lipponeur

On April 10th the Glenside family welcomed Paramedic/Part-time Firefighter Kyle Lipponeur.

Kyle was sworn-in to the position of full-time firefighter/paramedic.



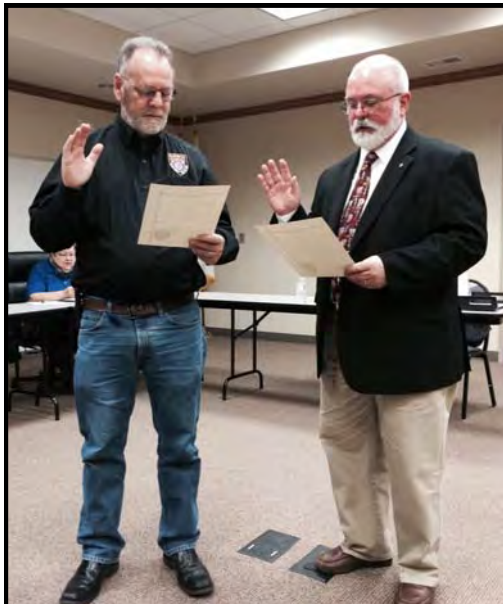
Trustee Kosiara leading the oath of office



Kyle and fiancé

Swearing-in of Commissioner Marty Olsen

On November 11th the Glenside family welcomed Marty Olsen as new Commissioner replacing Ray Rodriguez.



Personnel - Promotions / Retirements With The District

Swearing-in of Lieutenant Chris Cavanaugh

On December 9th Chris Cavanaugh was sworn-in to the position of Lieutenant at the Board of Trustees meeting .



Chris Cavanaugh and his family



Chief Wood, Deputy Chief Reid and Lieutenant Cavanaugh

Last Gold Shift with Lieutenant Robert Garon



Lieutenant Garon and members of his shift on the last shift day before retirement.

Lieutenant Garon and his family



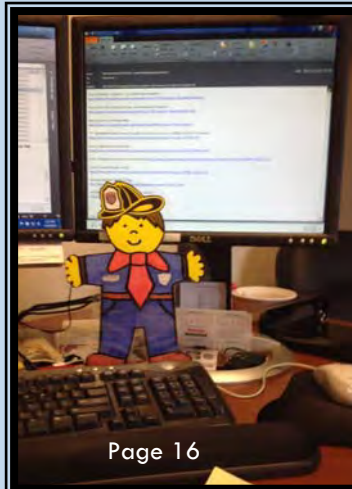
Glenside Family for Charity / Community



The Glenside Fire District participated in the Adventures of Flat Stanley 2nd grade program at Glen Hill Primary School in Glendale Heights. Stanley was asked if he could visit the fire station and see what the firefighters do. We were asked to tell the kids what Flat Stanley learned during his week with us.

The full 18 page report and presentation of Flat Stanley's experience at the fire station can be viewed on file with the Administrative office.

A few sample pictures have been included...



Fire Chiefs for the Day



Sound the Alarm... Fire Chiefs for the Day

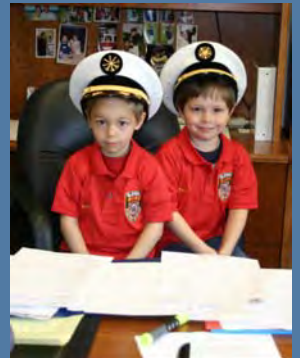
Aiden & Evan

Glenside Fire Protection District

April 17, 2014



The District continued its generous donation of time and talent through the “Fire Chief for the Day” program provided as a raffle item at the Glendale Heights Junior Women’s Club Bowling Event. The winner chose her twin grandsons who spent the day touring the station, giving the firefighters tasks and living the life of a Fire Chief. Firefighter Chris Wallin escorted the boys through various activities including training, use of equipment, exercising and EMS drills.



Glenside Family For Charity

Finest vs Bravest Charity Basketball Event

The third annual Glendale Heights Police versus the Glenside/Bloomington Firefighters charity basketball event took place in November at the Glendale Heights Sports Recreation Center. The event featured a competitive game that resulted in a nail biter of an ending! Representatives of the Fire Districts put up a great battle for the large crowd, but found themselves once again a couple of points short of the win. The \$2,500 raised in this charity event provided a \$1,250 donation to the American Cancer Society and assisted with the 2014 Christmas Sharing Program, covering a family of five with their Christmas wishes.



Bravest Team (Fire) picture - members included (back row) Coach Steve Long, Chris Cavanaugh, Coach Mike Small, Brian Hauser, Isaac Evans, Kyle Lipponeur, (second row) Jeremy Durbin, Landon Starkey, Chief Russ Wood, (third row) Louis DiGioia, and Mike Pacie among various Bloomington Fire District members. Acting Officer Mike Pacie was lead coordinator for the Bravest Team.



Glenside Family For Charity



NATIONAL FALLEN FIREFIGHTERS FOUNDATION'S ANNUAL



Chicagoland Tournament



"Honoring Our Fallen Heroes"



The District co-sponsored along with the Glenside Professional Firefighters Association, IAFF Local 3277, the 6th Annual Chicagoland Golf Tournament to benefit the National Fallen Firefighters Foundation and raised over \$47,600 in this single day event. The six year event has donated over \$179,600 to the foundation. Thirteen survivors and their families were presented with pin flags at dinner.



© JLT Photography



© JLT Photography



© JLT Photography



© JLT Photography

Glenside Family For Charity

Stocking Lake Becerra for the Annual Fishing Derby

Keeping with annual tradition, the Glenside Professional Firefighters Association contributed and assisted with the stocking of Lake Becerra for the annual fishing derby held in June of each year.



Character Counts Kiwanis Peanut Days



Deputy Chief James Reid (organizer), Paramedic/Firefighters Louis DiGioia and Jake Errington, Fire Marshal Curt Shires and Administrative Assistant Laura Haiden volunteered to help the Character Counts Coalition with their annual Kiwanis Peanuts Day Drive.

Glenside Family For Charity

MDA Fill The Boot Drive



The Glenside Professional Firefighters Local 3277 once again sponsored the “Fill The Boot” Drive to benefit the Muscular Dystrophy Association (MDA). Acting Officer Mike DeLillo organized the members of the District for the three-day October shift challenge event. A check in the amount of \$674 was given to the MDA representative and will benefit local area children. The past four year total collected for MDA is now over \$16,000.

Christmas Sharing Program

The 2014 Village of Glendale Heights Christmas Sharing Program received a helping hand from members of the administrative office of the Glenside Fire Protection District and the Glenside Professional Firefighters Association - Local 3277. Donations combined helped buy gifts for two families with 11 family members. The overall program helped 114 families / 411 individuals in our community.



Publication Education Events



Publication Education Events — Clockwise: National Night Out; Day of Reading; Party in the Park; First Aid Tent at VOGH Fest; Safety Town Class; Fishing Derby Preparations; Safety Town Class

Publication Education Events



Firefighter Jeff Hammond assists in the preparation of the firefighter children for the annual poster picture.



Annual Public Education Events

The District and its members were once again present at various public education events held within our community as well as at our own station.

- ◇ Glendale Heights 5-Day Fest with fireworks, first aid tent and public education information provided
- ◇ Safety Town Classes during summer break
- ◇ Health And Safety Fair held this year at the Glendale Heights Sports Center
- ◇ Fishing Derby annual stocking of the lake
- ◇ Various Parties in the Park sponsored by the Village
- ◇ National Night Out

See detailed report with public attendance summaries later in the report.

Annual In School Education Program

The District has continued to work with the administration for schools that reside within our District. The 3rd Grade Fire Safety Program has continued in the District 16 schools for the past 8 Years. This past year, the students were evaluated at the beginning and end of the 7 month program.

- ◇ 31% of students went from fail to pass on the fire safety quiz, bringing all students to an acceptable fire safety knowledge level
- ◇ 78% of students increased their overall quiz score over the course of the program

Fire Prevention Bureau



The fire prevention bureau has completed another successful year. We are proud to continue our Lunch and Learn sessions in cooperation with the Village's Senior Center and also Shorewood Tower/Thomas Senior apartments. Of note is that the Thomas Senior Apartment building is fully occupied with a waiting list. Public Storage on Schmale Ave. is also up and running and doing well.

We had several projects under way this year. Including, The Islamic Education Center on Goodrich, Medifil's two story occupancy of 405 Windy Point Dr. and the demolition of the abandoned night club at 602 E. North Ave. for the future construction of a gas station.

Working with our administrative assistant and the Fire District's attorney we have successfully annexed eleven properties into the Fire District which will provide a re-occurring income of more than \$20,000 a year.

With less construction taking place this year, we took advantage of our time and re-organized the Bureau's files and building plans. With 2014 behind us and existing and new construction coming in at a normal pace, our goal is to have completed a fire inspection on every inspectable occupancy in our Fire District within a 12 month period.

Below is a statistical summary for the 2014 Fire Prevention Bureau 1,237 total Activities:

575 Fire Inspections	355 Fire Alarm Tests
68 Plan reviews	26 Meetings
25 Public Education Activities	11 Consultations
6 Investigations	10 Fire Department Instructional Training

\$14,285 Inspection & Review Fees Collected

\$20,767 Projected annual tax collection increase from new annexations

Curt Shires, Fire Marshal

Robert Garon, Fire Inspector

EMERGENCY RESPONSES BY UNIT 2014

CHIEF 58	42
DEPUTY 58	80
MEDIC 58	1524
ENGINE 58	1044
ENGINE 59	314
QUINT 58	29
Engine 58/59	8
MEDIC 59	675
INSPECTOR 58	38
INSPECTOR 59	14
UTILITY 58	26
UTILITY 59 (MULE)	0
CHAPLAIN 58	1



TOTAL	3795
--------------	-------------





Glenside Fire Protection District

Annual Report Aid Responses by Department

Alarm Date Between {01/01/2014} And {12/31/2014}

Type of Aid	Count	Type of Aid	Count
ADSN Addison Fire Protection District		BLMD Bloomingdale Fire Protection District	
Mutual aid received	1		73
Automatic aid received	11		
Mutual aid given	1	BLMD A-7 Medic	
Automatic aid given	3	Mutual aid received	3
	16	Automatic aid received	1
			4
ADSN 100 Chief			
Automatic aid received	3	BLMD B-1 Battalion 1	
	3	Automatic aid received	3
			3
ADSN 101 Deputy Chief			
Automatic aid received	2	BLMD B-3 Battalion 3	
	2	Automatic aid received	1
			1
ADSN 130 Medic			
Automatic aid received	1	BLMD C-1 Chief	
	1	Automatic aid received	1
			1
ADSN 131 Engine			
Automatic aid received	1	BLMD E-1 Engine	
	1	Mutual aid received	1
		Automatic aid received	3
			4
ADSN 137 Tower Ladder			
Automatic aid received	4	BLMD E-2 Engine	
	4	Automatic aid received	2
			2
ARSON TASK DuPage County Arson Task Force			
Mutual aid given	1	BSNV Bensenville Fire Department	
	1	Mutual aid given	1
			1
BART Bartlett Fire Protection District			
Automatic aid received	3	CHIEF 28 Carol Stream Chief	
Other aid given	1	Automatic aid received	5
	4		5
BLMD Bloomingdale Fire Protection District			
Mutual aid received	6	CHIEF 38 Wheaton Chief	
Automatic aid received	11	Automatic aid received	2
Mutual aid given	34		2
Automatic aid given	22		2



Glenside Fire Protection District

Annual Report Aid Responses by Department

Alarm Date Between {01/01/2014} And {12/31/2014}

Type of Aid	Count	Type of Aid	Count
CRST Carol Stream Fire Protection District		ENGINE 61 Glen Ellyn Engine	
Mutual aid received	24	Mutual aid given	1
Automatic aid received	22		1
Mutual aid given	11		
Automatic aid given	7	GLYN Glen Ellyn Fire Protection District	
	64	Mutual aid received	5
		Automatic aid received	9
DC 28 Carol Stream Deputy Chief		Mutual aid given	15
Automatic aid received	1	Automatic aid given	12
	1		41
DC 61 Glen Ellyn Deputy Chief		GLYN M-61 Medic	
Automatic aid received	1	Mutual aid received	2
	1	Automatic aid received	4
			6
DW Darien-Woodridge			
Automatic aid received	1	HAPK Hanover Park Fire Protection District	
	1	Mutual aid received	3
		Automatic aid received	6
			9
EGRV Elk Grove Village			
Mutual aid received	1		
	1	HAPK 300 Chief	
		Automatic aid received	2
			2
ELMH Elmhurst Fire Department			
Mutual aid given	1		
	1	HAPK 301 Assistant Chief	
		Automatic aid received	2
			2
ENGINE 29 Carol Stream Engine			
Mutual aid received	1		
Automatic aid received	5	HAPK 306 Battalion Chief	
	6	Automatic aid received	1
			1
ENGINE 31 Winfield Engine			
Automatic aid received	1	HAPK 362 Engine	
	1	Automatic aid received	2
			2
ENGINE 39 Wheaton Engine			
Automatic aid received	3	HAPK 382 Medic	
	3	Automatic aid received	1
			1
ENGINE 61 Glen Ellyn Engine			



Glenside Fire Protection District

Annual Report Aid Responses by Department

Alarm Date Between {01/01/2014} And {12/31/2014}

Type of Aid	Count	Type of Aid	Count
ITAS Itasca Fire Protection Dist.		TOWER 28 Carol Stream Tower Ladder	
Automatic aid received	3		4
	3		
LOMB Lombard Fire Department		TRISTATE Tri-State Fire Protection District	
Mutual aid received	2	Automatic aid given	2
Automatic aid received	7		2
Mutual aid given	7		
Automatic aid given	4	VLPK Villa Park Fire Department	
	20	Automatic aid received	1
			1
MEDIC 29 Carol Stream Ambulance			
Mutual aid received	2	WEGO West Chicago Fire Department	
Automatic aid received	3	Automatic aid received	2
	5		2
MEDIC 37 Wheaton Ambulance		WFLD Winfield FPD	
Automatic aid received	2	Automatic aid received	4
	2		4
ROSE Roselle Fire Department		WHTN Wheaton Fire Department	
Mutual aid received	1	Mutual aid received	1
Automatic aid received	11	Automatic aid received	8
Mutual aid given	3	Mutual aid given	4
	15	Automatic aid given	1
		Other aid given	1
			15
SCHM Schaumburg Fire Department			
Mutual aid received	1	WOOD Wooddale Fire Protection District	
Automatic aid received	1	Mutual aid given	1
	2		1
SQUAD 6 West Chicago Squad			
Automatic aid received	1		
	1		
TENDER 31 Winfield Tender			
Automatic aid received	1		
	1		
TOWER 28 Carol Stream Tower Ladder			
Automatic aid received	4		



Glenside Fire Protection District

Annual Report Incident Type Report

Alarm Date Between {01/01/2014} And {12/31/2014}

Incident Type	Count	Pct of Incidents	Total Est Loss	Pct of Losses
1 Fire				
111 Building fire	35	1.47%	\$322,500	80.94%
112 Fires in structure other than in a building	2	0.08%	\$2,000	0.50%
113 Cooking fire, confined to container	6	0.25%	\$2,000	0.50%
118 Trash or rubbish fire, contained	1	0.04%	\$0	0.00%
131 Passenger vehicle fire	8	0.33%	\$32,500	8.15%
142 Brush or brush-and-grass mixture fire	4	0.16%	\$0	0.00%
150 Outside rubbish fire, Other	1	0.04%	\$20	0.00%
151 Outside rubbish, trash or waste fire	10	0.42%	\$500	0.12%
154 Dumpster or other outside trash receptacle	4	0.16%	\$110	0.02%
160 Special outside fire, Other	1	0.04%	\$500	0.12%
161 Outside storage fire	1	0.04%	\$18,900	4.74%
162 Outside equipment fire	2	0.08%	\$0	0.00%
	75	3.16%	\$379,030	95.13%
2 Overpressure Rupture, Explosion, Overheat(no fire)				
251 Excessive heat, scorch burns with no	3	0.12%	\$5,090	1.27%
	3	0.12%	\$5,090	1.27%
3 Rescue & Emergency Medical Service Incident				
320 Emergency medical service, other	1	0.04%	\$0	0.00%
321 EMS call, excluding vehicle accident with	1,352	57.14%	\$0	0.00%
322 Motor vehicle accident with injuries	91	3.84%	\$0	0.00%
323 Motor vehicle/pedestrian accident (MV Ped)	4	0.16%	\$0	0.00%
324 Motor Vehicle Accident with no injuries	7	0.29%	\$0	0.00%
353 Removal of victim(s) from stalled elevator	3	0.12%	\$0	0.00%
	1,458	61.62%	\$0	0.00%
4 Hazardous Condition (No Fire)				
412 Gas leak (natural gas or LPG)	63	2.66%	\$0	0.00%
422 Chemical spill or leak	2	0.08%	\$0	0.00%
424 Carbon monoxide incident	24	1.01%	\$0	0.00%
440 Electrical wiring/equipment problem, Other	1	0.04%	\$0	0.00%
442 Overheated motor	2	0.08%	\$300	0.07%
444 Power line down	15	0.63%	\$0	0.00%
445 Arcing, shorted electrical equipment	9	0.38%	\$5	0.00%
460 Accident, potential accident, Other	1	0.04%	\$0	0.00%
461 Building or structure weakened or collapsed	1	0.04%	\$6,000	1.50%



Glenside Fire Protection District

Annual Report Incident Type Report

Alarm Date Between {01/01/2014} And {12/31/2014}

Incident Type	Count	Pct of Incidents	Total Est Loss	Pct of Losses
4 Hazardous Condition (No Fire)	118	4.98%	\$6,305	1.58%
5 Service Call				
500 Service Call, other	1	0.04%	\$0	0.00%
510 Person in distress, Other	2	0.08%	\$0	0.00%
511 Lock-out	23	0.97%	\$300	0.07%
522 Water or steam leak	23	0.97%	\$4,500	1.12%
531 Smoke or odor removal	10	0.42%	\$0	0.00%
550 Public service assistance, Other	1	0.04%	\$0	0.00%
551 Assist police or other governmental agency	9	0.38%	\$0	0.00%
553 Public service	3	0.12%	\$0	0.00%
554 Assist invalid	71	3.00%	\$0	0.00%
561 Unauthorized burning	7	0.29%	\$0	0.00%
571 Cover assignment, standby, moveup	22	0.92%	\$0	0.00%
	172	7.26%	\$4,800	1.20%
6 Good Intent Call				
611 Dispatched & cancelled en route	90	3.80%	\$0	0.00%
622 No Incident found on arrival at dispatch	28	1.18%	\$0	0.00%
651 Smoke scare, odor of smoke	2	0.08%	\$0	0.00%
652 Steam, vapor, fog or dust thought to be	4	0.16%	\$2,000	0.50%
661 EMS call, party transported by non-fire	1	0.04%	\$0	0.00%
	125	5.28%	\$2,000	0.50%
7 False Alarm & False Call				
711 Municipal alarm system, malicious false	2	0.08%	\$0	0.00%
712 Direct tie to FD, malicious false alarm	2	0.08%	\$0	0.00%
715 Local alarm system, malicious false alarm	2	0.08%	\$0	0.00%
730 System malfunction, Other	1	0.04%	\$0	0.00%
731 Sprinkler activation due to malfunction	2	0.08%	\$0	0.00%
733 Smoke detector activation due to	15	0.63%	\$0	0.00%
734 Heat detector activation due to malfunction	2	0.08%	\$0	0.00%
735 Alarm system sounded due to malfunction	45	1.90%	\$400	0.10%
736 CO detector activation due to malfunction	13	0.54%	\$0	0.00%
740 Unintentional transmission of alarm, Other	1	0.04%	\$0	0.00%
741 Sprinkler activation, no fire -	3	0.12%	\$0	0.00%
743 Smoke detector activation, no fire -	210	8.87%	\$0	0.00%
744 Detector activation, no fire -	11	0.46%	\$800	0.20%
745 Alarm system activation, no fire -	84	3.55%	\$0	0.00%



Glenside Fire Protection District

Annual Report Incident Type Report

Alarm Date Between {01/01/2014} And {12/31/2014}

Incident Type	Count	Pct of Incidents	Total Est Loss	Pct of Losses
7 False Alarm & False Call				
746 Carbon monoxide detector activation, no CO	22	0.92%	\$0	0.00%
	415	17.54%	\$1,200	0.30%

Total Incident Count: 2366

Total Est Loss:

\$398,425



Glenside Fire Protection District
Historical Comparison of Transports
ALS vs. BLS

	2010	2011	2012	2013	2014
ALS Transports	609	638	617	549	686
BLS Transports	298	360	316	376	400
Refused Treat/Transport	154	156	112	139	208
Treated, Refused Transport	174	243	224	213	150
DOA	6	20	14	10	17
MPR	20	45	60	58	60
Treated, Transferred Care	42	40	45	12	8
Transported by GSDE	907	998	933	925	1086
ALS Calls (Total)	723	800	774	672	782
BLS Calls (Total)	580	702	510	686	747
Total Calls	1303	1502	1433	1421	1589



Mutual Aid Ambulance Report

2014													
Given	January	February	March	April	May	June	July	August	September	October	November	December	Total
Bloomingtondale	2	1	2	2	3		1	3		6	2	5	27
Lombard			1							1			2
Carol Stream	1	1		1	2			1	2	2		1	11
Glen Ellyn	1	1			2	2				2	2		10
Addison													0
Other						2							2
Totals	4	3	3	3	7	4	1	4	2	11	4	6	Given 52
Received	January	February	March	April	May	June	July	August	September	October	November	December	Total
Bloomingtondale		1											1
Lombard													0
Carol Stream		1			1	1	1	4	4	2	2	1	17
Glen Ellyn		1					1	1				1	4
Addison													0
Other													0
Totals	0	3	0	0	1	1	2	5	4	2	2	2	Received 22



Mutual Aid Given vs. Received

	2011		2012		2013		2014	
	Given	Received	Given	Received	Given	Received	Given	Received
January	6	3	2	5	5	1	4	0
February	2	12	3	3	0	1	3	3
March	3	9	5	10	4	4	3	0
April	1	3	3	4	3	2	3	0
May	2	6	2	4	7	1	7	1
June	6	3	2	4	4	2	4	1
July	4	4	2	12	5	0	1	2
August	6	8	1	7	3	1	4	5
September	5	7	3	1	3	0	2	4
October	5	5	3	7	5	1	11	2
November	4	7	3	2	2	0	4	2
December	2	3	2	8	4	3	6	2
Total	46	70	31	67	45	16	52	22
+/-	-24		-36		29		30	



Glenside Fire Protection District

Annual Report Primary Action Taken Report

Alarm Date Between {01/01/2014} And {12/31/2014}

Type of Action Taken	Count	Percent
10 Fire control or extinguishment, other	1	0.04 %
11 Extinguishment by fire service personnel	37	1.56 %
12 Salvage & overhaul	6	0.25 %
30 Emergency medical services, Other	1	0.04 %
31 Provide first aid & check for injuries	1	0.04 %
32 Provide basic life support (BLS)	653	27.59 %
33 Provide advanced life support (ALS)	634	26.79 %
34 Transport person	153	6.46 %
42 HazMat detection, monitoring, sampling, & analysis	17	0.71 %
45 Remove hazard	14	0.59 %
51 Ventilate	10	0.42 %
52 Forcible entry	15	0.63 %
55 Establish safe area	8	0.33 %
62 Restore sprinkler or fire protection system	1	0.04 %
63 Restore fire alarm system	207	8.74 %
64 Shut down system	40	1.69 %
70 Assistance, Other	3	0.12 %
71 Assist physically disabled	76	3.21 %
73 Provide manpower	4	0.16 %
74 Provide apparatus	1	0.04 %
75 Provide equipment	1	0.04 %
76 Provide water	1	0.04 %
78 Control traffic	1	0.04 %
81 Incident command	5	0.21 %
82 Notify other agencies.	1	0.04 %
84 Refer to proper authority	9	0.38 %
85 Enforce codes	4	0.16 %
86 Investigate	338	14.28 %
87 Investigate fire out on arrival	2	0.08 %
90 Fill-in, standby, Other	2	0.08 %
91 Fill-in or moveup	8	0.33 %
92 Standby	22	0.92 %
93 Cancelled en route	90	3.80 %

Total Incident Count: 2366



Glenside Fire Protection District

Annual Report Property Use Report

Alarm Date Between {01/01/2014} And {12/31/2014}

Property Use	Count	Percent of Incidents	Total Est Loss	Percent of Losses
No Property Use Reported	112	4.73%	\$0	0.00%
	<u>112</u>	<u>4.73%</u>	<u>\$0</u>	<u>0.00%</u>
100 Assembly				
100 Assembly, Other	1	0.04%	\$0	0.00%
110 Fixed-use recreation places, other	10	0.42%	\$0	0.00%
111 Bowling establishment	6	0.25%	\$0	0.00%
116 Swimming facility: indoor or outdoor	1	0.04%	\$0	0.00%
120 Variable-use amusement, recreation places, other	3	0.12%	\$0	0.00%
124 Playground	13	0.54%	\$0	0.00%
131 Church, mosque, synagogue, temple, chapel	15	0.63%	\$0	0.00%
141 Athletic/health club	1	0.04%	\$0	0.00%
142 Clubhouse	4	0.16%	\$0	0.00%
150 Public or government, Other	27	1.14%	\$0	0.00%
151 Library	1	0.04%	\$0	0.00%
160 Eating, drinking places, other	7	0.29%	\$0	0.00%
161 Restaurant or cafeteria	26	1.09%	\$800	0.20%
162 Bar or nightclub	1	0.04%	\$0	0.00%
	<u>116</u>	<u>4.90%</u>	<u>\$800</u>	<u>0.20%</u>
200 Educational				
200 Educational, Other	7	0.29%	\$0	0.00%
211 Preschool	2	0.08%	\$2,000	0.50%
213 Elementary school, including kindergarten	18	0.76%	\$10	0.00%
215 High school/junior high school/middle school	7	0.29%	\$0	0.00%
241 Adult education center, college classroom	2	0.08%	\$0	0.00%
	<u>36</u>	<u>1.52%</u>	<u>\$2,010</u>	<u>0.50%</u>
300 Health Care, Detention & Correction				
311 24-hour care Nursing homes, 4 or more persons	3	0.12%	\$0	0.00%
321 Mental retardation/development disability facility	2	0.08%	\$0	0.00%
331 Hospital - medical or psychiatric	13	0.54%	\$100	0.03%
340 Clinics, doctors offices, hemodialysis	7	0.29%	\$0	0.00%



Glenside Fire Protection District

Annual Report Property Use Report

Alarm Date Between {01/01/2014} And {12/31/2014}

Property Use	Count	Percent of Incidents	Total Est Loss	Percent of Losses
300 Health Care, Detention & Correction				
cntr, other				
361 Jail, prison (not juvenile)	3	0.12%	\$0	0.00%
365 Police station	13	0.54%	\$0	0.00%
	<u>41</u>	<u>1.73%</u>	<u>\$100</u>	<u>0.03%</u>
400 Residential				
400 Residential, Other	1	0.04%	\$0	0.00%
419 1 or 2 family dwelling	964	40.74%	\$281,775	70.72%
429 Multifamily dwelling	657	27.76%	\$54,040	13.56%
449 Hotel/motel, commercial	15	0.63%	\$0	0.00%
460 Dormitory-type residence, other	1	0.04%	\$0	0.00%
	<u>1,638</u>	<u>69.23%</u>	<u>\$335,815</u>	<u>84.28%</u>
500 Mercantile, Business				
500 Mercantile, business, Other	3	0.12%	\$500	0.13%
511 Convenience store	1	0.04%	\$0	0.00%
519 Food and beverage sales, grocery store	21	0.88%	\$0	0.00%
539 Household goods, sales, repairs	1	0.04%	\$0	0.00%
549 Specialty shop	4	0.16%	\$0	0.00%
557 Personal service, including barber & beauty shops	8	0.33%	\$0	0.00%
569 Professional supplies, services	2	0.08%	\$0	0.00%
571 Service station, gas station	8	0.33%	\$0	0.00%
579 Motor vehicle or boat sales, services, repair	18	0.76%	\$0	0.00%
580 General retail, Other	12	0.50%	\$0	0.00%
581 Department or discount store	2	0.08%	\$0	0.00%
592 Bank	2	0.08%	\$0	0.00%
593 Office: veterinary or research	1	0.04%	\$0	0.00%
599 Business office	7	0.29%	\$0	0.00%
	<u>90</u>	<u>3.80%</u>	<u>\$500</u>	<u>0.13%</u>
600 Industrial, Utility, Defense, Agriculture, Mining				
629 Laboratory or science laboratory	4	0.16%	\$0	0.00%
642 Electrical distribution	1	0.04%	\$0	0.00%
648 Sanitation utility	3	0.12%	\$0	0.00%
	<u>8</u>	<u>0.33%</u>	<u>\$0</u>	<u>0.00%</u>
700 Manufacturing, Processing				



Glenside Fire Protection District

Annual Report Property Use Report

Alarm Date Between {01/01/2014} And {12/31/2014}

Property Use	Count	Percent of Incidents	Total Est Loss	Percent of Losses
700 Manufacturing, Processing				
700 Manufacturing, processing	33	1.39%	\$5,000	1.25%
	<u>33</u>	<u>1.39%</u>	<u>\$5,000</u>	<u>1.25%</u>
800 Storage				
807 Outside material storage area	1	0.04%	\$0	0.00%
808 Outbuilding or shed	1	0.04%	\$0	0.00%
839 Refrigerated storage	1	0.04%	\$0	0.00%
880 Vehicle storage, Other	1	0.04%	\$0	0.00%
882 Parking garage, general vehicle	1	0.04%	\$0	0.00%
888 Fire station	19	0.80%	\$0	0.00%
891 Warehouse	25	1.05%	\$0	0.00%
899 Residential or self-storage units	7	0.29%	\$19,200	4.82%
	<u>56</u>	<u>2.36%</u>	<u>\$19,200</u>	<u>4.82%</u>
900 Outside or Special Property				
900 Outside or special property, Other	1	0.04%	\$0	0.00%
931 Open land or field	4	0.16%	\$500	0.13%
936 Vacant lot	1	0.04%	\$0	0.00%
938 Graded and cared-for plots of land	15	0.63%	\$0	0.00%
946 Lake, river, stream	1	0.04%	\$0	0.00%
951 Railroad right-of-way	1	0.04%	\$0	0.00%
961 Highway or divided highway	64	2.70%	\$1,000	0.25%
962 Residential street, road or residential driveway	77	3.25%	\$27,000	6.78%
963 Street or road in commercial area	13	0.54%	\$0	0.00%
965 Vehicle parking area	40	1.69%	\$4,500	1.13%
983 Pipeline, power line or other utility right-of-way	3	0.12%	\$0	0.00%
984 Industrial plant yard - area	1	0.04%	\$0	0.00%
	<u>221</u>	<u>9.34%</u>	<u>\$33,000</u>	<u>8.29%</u>
N00				
NNN None	15	0.63%	\$2,000	0.50%
	<u>15</u>	<u>0.63%</u>	<u>\$2,000</u>	<u>0.50%</u>

Total Incident Count: 2,366

Total Est Losses: \$398,425



Glenside Fire Protection District

Annual Report Type of Alarm Report

Alarm Date Between {01/01/2014} And {12/31/2014}

Type of Alarm		Count	Percent
1	Still	2,084	88.08%
1A	Still alarm with CB	44	1.85%
2	Full Still	1	0.04%
3	General	231	9.76%
4	Special	4	0.16%
5	MABAS Box Alarm	2	0.08%

Total Incident Count: 2,366



Glenside Fire Protection District

Annual Report Incidents by District

Alarm Date Between {01/01/2014} And {12/31/2014}

District		Count	Pct of Incidents	Est Losses	Pct of Losses
580	West of Bloomingdale; No Hydrants	7	0.29 %	\$0	0.00 %
583	West of Bloomingdale; North of Fullerton	307	12.97 %	\$212,870	53.43 %
584	West of Bloomingdale; South of Fullerton	361	15.25 %	\$54,405	13.66 %
585	West of Bloomingdale; South of North Avenue	39	1.64 %	\$0	0.00 %
586	West of Bloomingdale; North of Fullerton:	16	0.67 %	\$0	0.00 %
587	Concord Green Shopping Center	29	1.22 %	\$800	0.20 %
590	East of Bloomingdale; No Hydrants	162	6.84 %	\$23,500	5.90 %
593	East of Bloomingdale; North of Fullerton	223	9.42 %	\$0	0.00 %
594	East of Bloomingdale; South of Fullerton	554	23.41 %	\$93,550	23.48 %
595	East of Bloomingdale; South of North Avenue	320	13.52 %	\$8,300	2.08 %
596	East of Bloomingdale; North of Fullerton:	29	1.22 %	\$5,000	1.25 %
599	East of Bloomingdale; South of North Ave:	110	4.64 %	\$0	0.00 %
ADSN	Addison FPD	9	0.38 %	\$0	0.00 %
BLMD	Bloomingdale FPD	44	1.85 %	\$0	0.00 %
BNSV	Bensenville Fire Protection District	1	0.04 %	\$0	0.00 %
CRST	Carol Stream FPD	33	1.39 %	\$0	0.00 %
DAR	Darien	1	0.04 %	\$0	0.00 %
ELMH	Elmhurst Fire Department	1	0.04 %	\$0	0.00 %
GLYN	Glen Ellyn Volunteer Fire Company	26	1.09 %	\$0	0.00 %
LOMB	Lombard Fire Department	14	0.59 %	\$0	0.00 %
OUT	Out Of District	66	2.78 %	\$0	0.00 %
ROSE	Roselle Fire Department	2	0.08 %	\$0	0.00 %
TRI	Tri-State Fire Protection District	1	0.04 %	\$0	0.00 %
WEGO	West Chicago FPD	3	0.12 %	\$0	0.00 %
WHTN	Wheaton FD	7	0.29 %	\$0	0.00 %
WOOD	Wood Dale FPD	1	0.04 %	\$0	0.00 %
Total Incident Count: 2366		Total Est Losses:		\$398,425	

Glenside Fire Protection District
Annual Report Incident Type Summary By District
Alarm Date Between {01/01/2014} And {12/31/2014}

District	False	Fire	Good	Hazard	Overpressu	Rescue	Service	Special	Weather	Total
580	0	1	0	0	0	5	1	0	0	7
583	19	10	6	24	1	224	23	0	0	307
584	101	7	7	6	0	227	13	0	0	361
585	8	0	1	1	0	28	1	0	0	39
586	7	0	1	1	0	7	0	0	0	16
587	6	1	1	2	0	19	0	0	0	29
590	4	8	1	13	0	121	15	0	0	162
593	25	1	2	13	0	157	25	0	0	223
594	88	15	11	42	1	350	47	0	0	554
595	107	8	12	9	0	169	15	0	0	320
596	10	0	0	2	1	15	1	0	0	29
599	33	0	2	2	0	64	9	0	0	110
ADSN	0	1	5	0	0	0	3	0	0	9
BLMD	1	6	15	1	0	17	4	0	0	44
BNSV	0	0	0	0	0	0	1	0	0	1
CRST	1	2	19	0	0	11	0	0	0	33
DAR	0	0	0	0	0	0	1	0	0	1
ELMH	0	1	0	0	0	0	0	0	0	1
GLYN	1	5	8	0	0	11	1	0	0	26
LOMB	0	2	4	1	0	4	3	0	0	14
OUT	3	6	24	0	0	28	5	0	0	66
ROSE	0	0	0	0	0	0	2	0	0	2
TRI	0	1	0	0	0	0	0	0	0	1
WEGO	0	0	3	0	0	0	0	0	0	3
WHTN	1	0	3	0	0	1	2	0	0	7
WOOD	0	0	0	1	0	0	0	0	0	1
	415	75	125	118	3	1458	172	0	0	2366



Glenside Fire Protection District
Annual Report Incidents by Day of Week/Shift
Alarm Date Between {01/01/2014} And {12/31/2014}

Day/Shift	Count	Percentage
Sunday		
1 Black	133	5.62%
2 Red	87	3.67%
3 Gold	100	4.22%
	320	13.52%
Monday		
1 Black	123	5.19%
2 Red	132	5.57%
3 Gold	110	4.64%
	365	15.42%
Tuesday		
1 Black	138	5.83%
2 Red	96	4.05%
3 Gold	100	4.22%
	334	14.11%
Wednesday		
1 Black	118	4.98%
2 Red	112	4.73%
3 Gold	108	4.56%
	338	14.28%
Thursday		
1 Black	142	6.00%
2 Red	96	4.05%
3 Gold	99	4.18%
	337	14.24%
Friday		
1 Black	143	6.04%
2 Red	112	4.73%
3 Gold	104	4.39%
	359	15.17%
Saturday		
1 Black	112	4.73%
2 Red	97	4.09%
3 Gold	104	4.39%
		13.22%

Total Incidents by Shift		
Day/Shift	Count	Percent
1 Black	909	38.41%
2 Red	732	30.94%
3 Gold	725	30.65%



Glenside Fire Protection District

Annual Report Incident Type by Day of Week

Alarm Date Between {01/01/2014} And {12/31/2014}

Day of Week	Count	Percent
111 Building fire		
Sunday	3	0.12 %
Monday	8	0.33 %
Tuesday	4	0.16 %
Wednesday	5	0.21 %
Thursday	8	0.33 %
Friday	3	0.12 %
Saturday	4	0.16 %
	<u>35</u>	<u>1.47 %</u>

112 Fires in structure other than in a		
Monday	2	0.08 %
	<u>2</u>	<u>0.08 %</u>

113 Cooking fire, confined to container		
Sunday	1	0.04 %
Monday	1	0.04 %
Tuesday	1	0.04 %
Thursday	1	0.04 %
Saturday	2	0.08 %
	<u>6</u>	<u>0.25 %</u>

118 Trash or rubbish fire, contained		
Thursday	1	0.04 %
	<u>1</u>	<u>0.04 %</u>

131 Passenger vehicle fire		
Sunday	1	0.04 %
Monday	1	0.04 %
Wednesday	3	0.12 %
Thursday	1	0.04 %
Friday	2	0.08 %
	<u>8</u>	<u>0.33 %</u>

142 Brush or brush-and-grass mixture fire		
Sunday	2	0.08 %
Wednesday	1	0.04 %
Saturday	1	0.04 %
	<u>4</u>	<u>0.16 %</u>

150 Outside rubbish fire, Other

Day of Week	Count	Percent
150 Outside rubbish fire, Other		
Saturday	1	0.04 %
	<u>1</u>	<u>0.04 %</u>
151 Outside rubbish, trash or waste fire		
Sunday	1	0.04 %
Tuesday	3	0.12 %
Wednesday	2	0.08 %
Thursday	1	0.04 %
Friday	1	0.04 %
Saturday	2	0.08 %
	<u>10</u>	<u>0.42 %</u>

154 Dumpster or other outside trash		
Sunday	1	0.04 %
Friday	2	0.08 %
Saturday	1	0.04 %
	<u>4</u>	<u>0.16 %</u>

160 Special outside fire, Other		
Sunday	1	0.04 %
	<u>1</u>	<u>0.04 %</u>

161 Outside storage fire		
Sunday	1	0.04 %
	<u>1</u>	<u>0.04 %</u>

162 Outside equipment fire		
Sunday	1	0.04 %
Monday	1	0.04 %
	<u>2</u>	<u>0.08 %</u>

251 Excessive heat, scorch burns with no		
Tuesday	1	0.04 %
Wednesday	1	0.04 %
Thursday	1	0.04 %
	<u>3</u>	<u>0.12 %</u>

320 Emergency medical service, other		
Wednesday	1	0.04 %



Glenside Fire Protection District

Annual Report Incident Type by Day of Week

Alarm Date Between {01/01/2014} And {12/31/2014}

Day of Week	Count	Percent
320 Emergency medical service, other		
	1	0.04 %

321 EMS call, excluding vehicle accident

Sunday	186	7.86 %
Monday	192	8.11 %
Tuesday	192	8.11 %
Wednesday	197	8.32 %
Thursday	187	7.90 %
Friday	204	8.62 %
Saturday	194	8.19 %
	1352	57.14 %

322 Motor vehicle accident with injuries

Sunday	9	0.38 %
Monday	10	0.42 %
Tuesday	16	0.67 %
Wednesday	14	0.59 %
Thursday	12	0.50 %
Friday	18	0.76 %
Saturday	12	0.50 %
	91	3.84 %

323 Motor vehicle/pedestrian accident (MV

Wednesday	1	0.04 %
Thursday	1	0.04 %
Saturday	2	0.08 %
	4	0.16 %

324 Motor Vehicle Accident with no injuries

Sunday	2	0.08 %
Monday	1	0.04 %
Tuesday	1	0.04 %
Thursday	1	0.04 %
Friday	1	0.04 %
Saturday	1	0.04 %
	7	0.29 %

353 Removal of victim(s) from stalled

Sunday	1	0.04 %
Thursday	1	0.04 %

Day of Week	Count	Percent
353 Removal of victim(s) from stalled		
Saturday	1	0.04 %
	3	0.12 %

412 Gas leak (natural gas or LPG)

Sunday	8	0.33 %
Monday	10	0.42 %
Tuesday	7	0.29 %
Wednesday	7	0.29 %
Thursday	12	0.50 %
Friday	10	0.42 %
Saturday	9	0.38 %
	63	2.66 %

422 Chemical spill or leak

Sunday	1	0.04 %
Wednesday	1	0.04 %
	2	0.08 %

424 Carbon monoxide incident

Sunday	1	0.04 %
Monday	4	0.16 %
Tuesday	7	0.29 %
Wednesday	5	0.21 %
Thursday	2	0.08 %
Friday	1	0.04 %
Saturday	4	0.16 %
	24	1.01 %

440 Electrical wiring/equipment problem,

Tuesday	1	0.04 %
	1	0.04 %

442 Overheated motor

Thursday	1	0.04 %
Saturday	1	0.04 %
	2	0.08 %

444 Power line down

Sunday	1	0.04 %
Monday	6	0.25 %



Glenside Fire Protection District

Annual Report Incident Type by Day of Week

Alarm Date Between {01/01/2014} And {12/31/2014}

Day of Week	Count	Percent
444 Power line down		
Tuesday	2	0.08 %
Wednesday	2	0.08 %
Thursday	1	0.04 %
Friday	1	0.04 %
Saturday	2	0.08 %
	<u>15</u>	<u>0.63 %</u>
445 Arcing, shorted electrical equipment		
Sunday	1	0.04 %
Monday	2	0.08 %
Wednesday	4	0.16 %
Thursday	1	0.04 %
Saturday	1	0.04 %
	<u>9</u>	<u>0.38 %</u>
460 Accident, potential accident, Other		
Tuesday	1	0.04 %
	<u>1</u>	<u>0.04 %</u>
461 Building or structure weakened or		
Sunday	1	0.04 %
	<u>1</u>	<u>0.04 %</u>
500 Service Call, other		
Wednesday	1	0.04 %
	<u>1</u>	<u>0.04 %</u>
510 Person in distress, Other		
Sunday	1	0.04 %
Friday	1	0.04 %
	<u>2</u>	<u>0.08 %</u>
511 Lock-out		
Sunday	2	0.08 %
Monday	3	0.12 %
Wednesday	5	0.21 %
Thursday	5	0.21 %
Friday	5	0.21 %
Saturday	3	0.12 %

Day of Week	Count	Percent
511 Lock-out	<u>23</u>	<u>0.97 %</u>
522 Water or steam leak		
Sunday	3	0.12 %
Monday	5	0.21 %
Tuesday	4	0.16 %
Wednesday	1	0.04 %
Thursday	2	0.08 %
Friday	7	0.29 %
Saturday	1	0.04 %
	<u>23</u>	<u>0.97 %</u>
531 Smoke or odor removal		
Sunday	3	0.12 %
Monday	2	0.08 %
Tuesday	1	0.04 %
Thursday	1	0.04 %
Friday	1	0.04 %
Saturday	2	0.08 %
	<u>10</u>	<u>0.42 %</u>
550 Public service assistance, Other		
Tuesday	1	0.04 %
	<u>1</u>	<u>0.04 %</u>
551 Assist police or other governmental		
Sunday	1	0.04 %
Monday	1	0.04 %
Wednesday	1	0.04 %
Thursday	2	0.08 %
Friday	2	0.08 %
Saturday	2	0.08 %
	<u>9</u>	<u>0.38 %</u>
553 Public service		
Wednesday	1	0.04 %
Thursday	1	0.04 %
Friday	1	0.04 %
	<u>3</u>	<u>0.12 %</u>



Glenside Fire Protection District

Annual Report Incident Type by Day of Week

Alarm Date Between {01/01/2014} And {12/31/2014}

Day of Week	Count	Percent
554 Assist invalid		
Sunday	5	0.21 %
Monday	13	0.54 %
Tuesday	7	0.29 %
Wednesday	7	0.29 %
Thursday	11	0.46 %
Friday	18	0.76 %
Saturday	10	0.42 %
	<u>71</u>	<u>3.00 %</u>

561 Unauthorized burning		
Sunday	3	0.12 %
Monday	1	0.04 %
Saturday	3	0.12 %
	<u>7</u>	<u>0.29 %</u>

571 Cover assignment, standby, moveup		
Sunday	4	0.16 %
Monday	4	0.16 %
Tuesday	2	0.08 %
Wednesday	4	0.16 %
Thursday	5	0.21 %
Friday	3	0.12 %
	<u>22</u>	<u>0.92 %</u>

611 Dispatched & cancelled en route		
Sunday	11	0.46 %
Monday	15	0.63 %
Tuesday	14	0.59 %
Wednesday	14	0.59 %
Thursday	14	0.59 %
Friday	14	0.59 %
Saturday	8	0.33 %
	<u>90</u>	<u>3.80 %</u>

622 No Incident found on arrival at dispatch		
Sunday	4	0.16 %
Monday	5	0.21 %
Tuesday	3	0.12 %
Wednesday	4	0.16 %
Thursday	3	0.12 %
Friday	4	0.16 %

Day of Week	Count	Percent
622 No Incident found on arrival at dispatch		
Saturday	5	0.21 %
	<u>28</u>	<u>1.18 %</u>

651 Smoke scare, odor of smoke		
Wednesday	1	0.04 %
Saturday	1	0.04 %
	<u>2</u>	<u>0.08 %</u>

652 Steam, vapor, fog or dust thought to be		
Sunday	1	0.04 %
Tuesday	1	0.04 %
Thursday	1	0.04 %
Friday	1	0.04 %
	<u>4</u>	<u>0.16 %</u>

661 EMS call, party transported by non-fire		
Thursday	1	0.04 %
	<u>1</u>	<u>0.04 %</u>

711 Municipal alarm system, malicious false		
Wednesday	2	0.08 %
	<u>2</u>	<u>0.08 %</u>

712 Direct tie to FD, malicious false alarm		
Sunday	1	0.04 %
Thursday	1	0.04 %
	<u>2</u>	<u>0.08 %</u>

715 Local alarm system, malicious false		
Monday	1	0.04 %
Wednesday	1	0.04 %
	<u>2</u>	<u>0.08 %</u>

730 System malfunction, Other		
Tuesday	1	0.04 %
	<u>1</u>	<u>0.04 %</u>

731 Sprinkler activation due to malfunction		
Wednesday	1	0.04 %



Glenside Fire Protection District

Annual Report Incident Type by Day of Week

Alarm Date Between {01/01/2014} And {12/31/2014}

Day of Week	Count	Percent
731 Sprinkler activation due to malfunction		
Saturday	1	0.04 %
	2	0.08 %
733 Smoke detector activation due to		
Sunday	1	0.04 %
Monday	4	0.16 %
Tuesday	3	0.12 %
Wednesday	3	0.12 %
Thursday	4	0.16 %
	15	0.63 %
734 Heat detector activation due to		
Monday	1	0.04 %
Tuesday	1	0.04 %
	2	0.08 %
735 Alarm system sounded due to malfunction		
Sunday	6	0.25 %
Monday	12	0.50 %
Tuesday	7	0.29 %
Wednesday	7	0.29 %
Thursday	3	0.12 %
Friday	5	0.21 %
Saturday	5	0.21 %
	45	1.90 %
736 CO detector activation due to		
Sunday	2	0.08 %
Monday	3	0.12 %
Tuesday	2	0.08 %
Wednesday	2	0.08 %
Thursday	1	0.04 %
Friday	2	0.08 %
Saturday	1	0.04 %
	13	0.54 %
740 Unintentional transmission of alarm,		
Tuesday	1	0.04 %
	1	0.04 %

Day of Week	Count	Percent
741 Sprinkler activation, no fire -		
Thursday	1	0.04 %
Friday	1	0.04 %
Saturday	1	0.04 %
	3	0.12 %
743 Smoke detector activation, no fire -		
Sunday	35	1.47 %
Monday	37	1.56 %
Tuesday	32	1.35 %
Wednesday	24	1.01 %
Thursday	31	1.31 %
Friday	30	1.26 %
Saturday	21	0.88 %
	210	8.87 %
744 Detector activation, no fire -		
Monday	1	0.04 %
Tuesday	1	0.04 %
Wednesday	4	0.16 %
Thursday	1	0.04 %
Friday	3	0.12 %
Saturday	1	0.04 %
	11	0.46 %
745 Alarm system activation, no fire -		
Sunday	9	0.38 %
Monday	14	0.59 %
Tuesday	14	0.59 %
Wednesday	11	0.46 %
Thursday	16	0.67 %
Friday	13	0.54 %
Saturday	7	0.29 %
	84	3.55 %
746 Carbon monoxide detector activation, no		
Sunday	5	0.21 %
Monday	5	0.21 %
Tuesday	3	0.12 %
Thursday	1	0.04 %
Friday	5	0.21 %
Saturday	3	0.12 %



Glenside Fire Protection District

Annual Report Incident Type by Day of Week

Alarm Date Between {01/01/2014} And {12/31/2014}

Day of Week	Count	Percent
746 Carbon monoxide detector activation, no	22	0.92 %



Glenside Fire Protection District

Incident Response Time Analysis

Alarm Date Between {01/01/2014} And {12/31/2014}

Response		Count	Percentage
Hrs	Mins		
	00	50	2.3%
	01	53	2.5%
	02	178	8.3%
	03	401	18.7%
	04	600	27.9%
	05	458	21.3%
	06	216	10.0%
	07	97	4.5%
	08	36	1.6%
	09	11	0.5%
	10	7	0.3%
	11	10	0.4%
	12	6	0.2%
	13	4	0.1%
	14	5	0.2%
	15	1	0.0%
	16	3	0.1%
	17	2	0.0%
	18	1	0.0%
	19	4	0.0%

2143

Overall Average Response Time: 00:04:47



Glenside Fire Protection District

Annual Report Dollar Value Saved & Loss Analysis

Alarm Date Between {01/01/2014} And {12/31/2014}

Incident Type	Count	Total Values	Total Losses	Total Saved	Percent Lost	Percent Saved
111 Building fire	13	126,889,057	\$322,500	126,566,557	0.25%	99.75
112 Fires in structure other	2	\$262,000	\$2,000	\$260,000	0.76%	99.24
113 Cooking fire, confined to	1	\$100,000	\$2,000	\$98,000	2.00%	98.00
131 Passenger vehicle fire	6	\$51,900	\$32,500	\$19,400	62.62%	37.38
142 Brush or brush-and-grass	1	\$2	\$0	\$2	0.00%	**. **
150 Outside rubbish fire,	1	\$0	\$20	\$-20	0.00%	0.00
151 Outside rubbish, trash or	2	\$2,500,500	\$500	\$2,500,000	0.02%	99.98
154 Dumpster or other outside	2	\$5,020	\$110	\$4,910	2.19%	97.81
160 Special outside fire,	1	\$2,000	\$500	\$1,500	25.00%	75.00
161 Outside storage fire	1	\$18,900	\$18,900	\$0	100.00%	0.00
251 Excessive heat, scorch	3	\$120,050	\$5,090	\$114,960	4.24%	95.76
442 Overheated motor	1	\$500,000	\$300	\$499,700	0.06%	99.94
445 Arcing, shorted	1	\$140,000	\$5	\$139,995	0.00%	**. **
461 Building or structure	1	\$20,000	\$6,000	\$14,000	30.00%	70.00
511 Lock-out	1	\$120,000	\$300	\$119,700	0.25%	99.75
522 Water or steam leak	3	\$1,800,000	\$4,500	\$1,795,500	0.25%	99.75
652 Steam, vapor, fog or dust	1	\$2,000	\$2,000	\$0	100.00%	0.00
735 Alarm system sounded due	1	\$0	\$400	\$-400	0.00%	0.00
744 Detector activation, no	1	\$0	\$800	\$-800	0.00%	0.00
Grand Totals	43	132,531,429	\$398,425	132,133,004		
Total Percent Lost:		0.30 %	Total Percent Saved:		99.70	



Glenside Fire Protection District

Annual Report Area of Fire Origin Report

Alarm Date Between {01/01/2014} And {12/31/2014}

Area of Fire Origin	Count	Pct of All Fires	Total Est Loss	Pct of All Fire Losses
01 Hallway corridor, mall	1	3.03%	\$500	0.13%
24 Cooking area, kitchen	2	6.06%	\$0	0.00%
25 Bathroom, checkroom, lavatory, locker	2	6.06%	\$121,500	32.28%
26 Laundry area, wash house (laundry)	2	6.06%	\$58,300	15.49%
43 Storage: supplies or tools; dead storage	1	3.03%	\$500	0.13%
46 Chute/container - trash, rubbish, waste	1	3.03%	\$10	0.00%
55 Duct: hvac, cable, exhaust, heating, or	1	3.03%	\$100	0.03%
62 Heating room or area, water heater area	1	3.03%	\$50,200	13.34%
72 Exterior balcony, unenclosed porch	3	9.09%	\$2,200	0.58%
73 Ceiling & floor assembly, crawl space	1	3.03%	\$15,000	3.99%
74 Attic: vacant, crawl space above top	1	3.03%	\$15,000	3.99%
76 Wall surface: exterior	1	3.03%	\$1,500	0.40%
81 Operator/passenger area of	2	6.06%	\$4,600	1.22%
82 Cargo/trunk area - all vehicles	1	3.03%	\$0	0.00%
83 Engine area, running gear, wheel area	4	12.12%	\$27,900	7.41%
90 Outside area, Other	1	3.03%	\$0	0.00%
92 Highway, parking lot, street: on or near	2	6.06%	\$0	0.00%
93 Courtyard, patio, porch, terrace	2	6.06%	\$5,200	1.38%
94 Open area - outside; included are	3	9.09%	\$18,900	5.02%
UU Undetermined	1	3.03%	\$55,000	14.61%
Total Incident Count:	33		Total Est Loss:	\$376,410



Glenside Fire Protection District

Annual Report Cause of Ignition Report

Alarm Date Between {01/01/2014} And {12/31/2014}

Cause of Ignition	Count	Pct of All Fires	Total Est Loss	Pct of All Fire Losses
0 Cause, Other	3	9.09%	\$2,500	0.66%
2 Unintentional	19	57.57%	\$105,700	28.08%
3 Failure of equipment or heat source	1	3.03%	\$600	0.16%
5 Cause under investigation	6	18.18%	\$267,600	71.09%
U Cause undetermined after investigation	4	12.12%	\$10	0.00%
Total Incident Count:	33	Total Est Loss:	\$376,410	



Glenside Fire Protection District

NEPA Fire Experience Survey

01/01/2014 to 12/31/2014

Part III: BREAKDOWN OF STRUCTURE FIRES AND OTHER FIRES AND INCIDENTS

A. FIRES IN STRUCTURES BY FIXED PROPERTY USE	Number of Fires	Civilian Casualties		Property Damage
		Deaths	Injuries	
1. Private Dwellings	11	0	2	232,000
2. Apartments	6	0	0	50,700
3. Hotels and Motels	0	0	0	0
4. All Other Residential	0	0	0	0
5. TOTAL RESIDENTIAL FIRES	17	0	2	282,700
6. Public Assembly	1	0	0	0
7. Schools and Colleges	1	0	0	0
8. Health Care/Penal	1	0	0	100
9. Stores and Offices	0	0	0	0
10. Industry/Utility	0	0	0	0
11. Storage in Structures	0	0	0	0
12. Other Structures	0	0	0	0
13. TOTAL STRUCTURE FIRES	20	0	2	282,800
B. OTHER FIRES AND INCIDENTS				
14a. Highway Vehicles	7	0	1	31,400
14b. Other Vehicles	0	0	0	0
15. Non-Structure/Non-Vehicle	3	0	0	900
16. Brush/Grass/Wildland	4	0	0	XXXXXXXXXXXXXXXX
17. Rubbish/Dumpsters	15	0	0	XXXXXXXXXXXXXXXX
18. All Other Fires	0	0	0	500
19. TOTAL FOR FIRES	49	0	3	315,600
20. Rescue/Emergency Med	1,385	XX		
21. False Alarms	409	XX		
22. Mutual Aid (Given)	208	XX		
23a. Hazmat Responses	87	XX		
23b. Other Hazardous Responses	29	XX		
24. All Other Responses	196	XX		
25. TOTAL FOR ALL INCIDENTS	2,363	XX		
	Number of Confined Fires		Number of Nonconfined Fires	
5. Residential Fires (line 5 above)	5			12
13. Structure Fires (line 13 above)	7			13

Page 53



Glenside Fire Protection District

NFPA Fire Experience Survey

01/01/2014 to 12/31/2014

Part IV: BREAKDOWN OF FALSE ALARM RESPONSES

Type of Response	Number of Incidents
1. Malicious, Mischievous False Call	6
2. System Malfunction	76
3. Unintentional	327
4. Other False Alarms	0

Part V: INTENTIONALLY SET FIRES IN STRUCTURES AND VEHICLES

	Number of Fires	Civilian Deaths	Casualties Injuries	Property Damage
1. Structure Fires Intentionally Set	0	0	0	0
2. Vehicle Fires Intentionally Set	0	0	0	0

Part VI: FIRE SERVICE EXPOSURES AND INJURIES

Total Number of Infectious Disease Exposures.....:	0
Total Number of Hazardous Condition Exposures.....:	0
Total Number of Nonfatal Firefighter Injuries.....:	2

On-Duty Fire Fighter Injuries (Nonfatal) by Type of Duty, and Nature of Most Serious Injury

Nature of Most Serious Injury	Respond/ Return	At Fire Ground	Non-Fire Emerg	Train.	Other On-Duty
1. Burns	0	0	0	0	0
2a. Smoke or Gas Inhalation	0	0	0	0	0
2b. Other Respiratory Distress	0	0	0	0	0
3. Burns and Smoke Inhalation	0	0	0	0	0
4. Wound/Cut/Bleeding/Bruise	0	0	1	0	0
5. Dislocation/Fracture	0	0	0	0	0
6. Heart Attack or Stroke	0	0	0	0	0
7. Strain/Sprain/Muscle Pain	0	0	0	0	0
8. Thermal Stress	0	0	0	0	0
9. All Other	0	0	1	0	0
10. TOTAL	0	0	2	0	0

Fire Ground Injuries (Nonfatal) By Cause

1. Exposure to Fire Products	0	2. Exposure to Chem./Radiation	0
3. Fell, Slipped, Jumped	0	4. Overexertion	0
5. Stepped on/Contact With	0	6. Struck By	0
7. Extreme Weather	0	8. All Other	0

Number of Injuries Resulting in Lost Time: 0

How many shifts were lost as a result of these injuries: _____

Fire Department Vehicle Accidents

Accidents involving fire department emergency vehicles: _____ Resulting injuries: _____

Accidents involving firefighter's personal vehicles....: _____ Resulting injuries: _____



Glenside Fire Protection District

Annual Report Training Analysis by Category

Class Date Between {01/01/2014} And {12/31/2014}

Category	Classes	Pct of Classes	Attendees	Pct of Attendees	Hours	Pct of Hours
AB 201 Holmatro Air Bags	2	0.50%	38	1.47%	84.50	1.36%
AD02 Fire Department Organization	1	0.25%	10	0.38%	25.00	0.40%
AD04 Command training	1	0.25%	1	0.03%	2.00	0.03%
AP 201 Apparatus Inspection, Inventory, and Maintenance	13	3.26%	87	3.37%	190.50	3.06%
AP 202 Apparatus Emergency Procedures	1	0.25%	3	0.11%	3.00	0.04%
AP10 Apparatus Check Procedures	3	0.75%	22	0.85%	36.00	0.57%
CO 101 Candidate Orientation Book	21	5.27%	68	2.63%	168.50	2.71%
CO 201 Basic Engine Company Operations Practical	14	3.51%	155	6.01%	454.00	7.31%
CO 202 Ground Ladder Basics	3	0.75%	30	1.16%	70.00	1.12%
CO 203 Aerial Ladder Positioning	7	1.75%	60	2.32%	135.00	2.17%
CP 101 Company Preplans and Alarm Testing	12	3.01%	88	3.41%	155.75	2.50%
DR 101 VFIS Rollover Prevention	1	0.25%	1	0.03%	0.50	0.00%
DR 102 VFIS Intersections Program	1	0.25%	1	0.03%	0.50	0.00%
DR 104 VFIS Annual Drivers Training Videos	4	1.00%	31	1.20%	61.50	0.99%
DR 200 General Drivers Training Practical Evolution	22	5.52%	56	2.17%	91.25	1.46%
DR 201 Initial Drivers Training Practical Evolution	7	1.75%	8	0.31%	9.00	0.14%
DR 202 Secretary of State Drive Test	6	1.50%	6	0.23%	6.00	0.09%
DR 204 FSVO Pratical Course	1	0.25%	1	0.03%	0.00	0.00%
DR 206 New Driver Vehicle Orientation	3	0.75%	6	0.23%	2.00	0.03%
DR 301 Drivers Training: Ambulance Orientation	3	0.75%	3	0.11%	4.00	0.06%
DR 302 Drivers Training: Vehicle Handling Characteristics	1	0.25%	1	0.03%	1.00	0.01%
DR 303 Drivers Training: Backing and Divided Highways	2	0.50%	2	0.07%	2.00	0.03%
DR 304 Drivers Training: Familiarization with Major Stree	3	0.75%	3	0.11%	3.00	0.04%
DR 305 Drivers Training: Address Systems	2	0.50%	2	0.07%	2.00	0.03%
DR 306 Drivers Training: Shools and Village Buildings	2	0.50%	2	0.07%	2.00	0.03%
DR 307 Drivers Training: Parks and Recreational Facilitie	2	0.50%	2	0.07%	2.00	0.03%
DR 308 Drivers Training: Places of Worship	1	0.25%	1	0.03%	1.00	0.01%



Glenside Fire Protection District

Annual Report Training Analysis by Category

Class Date Between {01/01/2014} And {12/31/2014}

Category	Classes	Pct of Classes	Attendees	Pct of Attendees	Hours	Pct of Hours
DR 310 Drivers Training: Industrail Parks and Facilities	2	0.50%	3	0.11%	5.00	0.08%
DR 311 Drivers Training: Review of Schools Village Build	3	0.75%	4	0.15%	5.00	0.08%
DR 312 Drivers Training: Review of Address Systems	1	0.25%	1	0.03%	1.00	0.01%
DR 313 Drivers Training: Review Parks and Worship	1	0.25%	1	0.03%	1.50	0.02%
DT01 General Driver Training	12	3.01%	19	0.73%	26.00	0.41%
EL01 Electrical Safety	2	0.50%	37	1.43%	93.00	1.49%
EM03 Legal Responsibilities	1	0.25%	18	0.69%	49.50	0.79%
EM06 Respiratory Emergencies	7	1.75%	45	1.74%	76.50	1.23%
EM07 Cardiac Emergencies	3	0.75%	21	0.81%	38.00	0.61%
EM11 Medical Emergencies	5	1.25%	44	1.70%	100.00	1.61%
EM15 Lifting, Moving and Transporting Patients	5	1.25%	64	2.48%	155.00	2.49%
EM16 Communication & Reports	1	0.25%	1	0.03%	1.00	0.01%
EM17 Special Patients	2	0.50%	27	1.04%	74.00	1.19%
EM19 Blood borne pathogen certification	5	1.25%	33	1.28%	59.83	0.96%
EM20 CPR Recertification	3	0.75%	31	1.20%	85.75	1.38%
EM21 Adult Trauma	4	1.00%	26	1.00%	45.50	0.73%
EM23 Pediatric Medical Emergencies	1	0.25%	16	0.62%	24.00	0.38%
EM24 EMS Equipment Review	1	0.25%	15	0.58%	22.50	0.36%
EM51 Mass Cassualty and Triage	2	0.50%	30	1.16%	67.50	1.08%
EM52 Good Samaritain EMSS Continuing Education	23	5.77%	165	6.40%	427.00	6.87%
EM54 Special Topics (Specify)	7	1.75%	80	3.10%	120.00	1.93%
EM62 Pediatric Advanced Life Support	1	0.25%	11	0.42%	77.00	1.24%
EX 101 Vehicle Access / Forcible Entry	1	0.25%	6	0.23%	4.50	0.07%
FB 101 Fire Behavior	6	1.50%	52	2.01%	118.00	1.90%
FB 102 Reading Smoke Program	5	1.25%	57	2.21%	100.50	1.61%
FC01 Fire Control, General	1	0.25%	9	0.34%	22.50	0.36%
FC03 Fire Company pre plan walk through	11	2.76%	106	4.11%	227.00	3.65%
FC10 Fire Behavior	11	2.76%	77	2.98%	129.00	2.07%
FC20 Fire Apparatus Engineer	4	1.00%	33	1.28%	150.00	2.41%
FC40 Strategic and Tactical Operations	1	0.25%	8	0.31%	20.00	0.32%
FC90 Incident Command System	1	0.25%	6	0.23%	6.00	0.09%
FE01 Public Education	1	0.25%	25	0.96%	100.00	1.61%
FE02 Forcible Entry	1	0.25%	18	0.69%	54.00	0.86%
FH 201 Fire Hose Testing	3	0.75%	28	1.08%	103.25	1.66%
FH01 Fire hose operations	11	2.76%	91	3.52%	211.86	3.41%



Glenside Fire Protection District

Annual Report Training Analysis by Category

Class Date Between {01/01/2014} And {12/31/2014}

Category	Classes	Pct of Classes	Attendees	Pct of Attendees	Hours	Pct of Hours
FI 201 Dupage County Investigation Task Force	4	1.00%	6	0.23%	39.50	0.63%
FI 203 Investigator Seminar	1	0.25%	5	0.19%	40.00	0.64%
FI70 Fire Protection Systems	1	0.25%	8	0.31%	12.00	0.19%
FI72 Sprinkler Systems	1	0.25%	7	0.27%	7.00	0.11%
FILO ORIENT FILO Orientation	1	0.25%	1	0.03%	2.00	0.03%
FL01 Ladders	2	0.50%	21	0.81%	63.00	1.01%
FO01 Fire Officer training	1	0.25%	1	0.03%	9.00	0.14%
FOI 102 Instructor I	1	0.25%	1	0.03%	40.00	0.64%
FOI 103 Fire Prevention Principles	1	0.25%	1	0.03%	40.00	0.64%
FP03 Portable Extinguishers	1	0.25%	8	0.31%	8.00	0.12%
FR01 Rescue	3	0.75%	20	0.77%	27.00	0.43%
FR02 Ropes and knots	2	0.50%	12	0.46%	19.00	0.30%
FS03 Salvage and Overhaul	2	0.50%	25	0.96%	64.50	1.03%
FS04 Safety	1	0.25%	6	0.23%	6.00	0.09%
FU01 Fundamentals Of Fire Suppression	1	0.25%	7	0.27%	7.00	0.11%
FV01 General Fire Investigation	2	0.50%	5	0.19%	14.50	0.23%
FV02 Ventilation	4	1.00%	27	1.04%	44.50	0.71%
GEAR Advanced Gear Inspections	1	0.25%	8	0.31%	24.00	0.38%
HZ 502 OSFM Hazardous Materials Technician A	5	1.25%	35	1.35%	350.00	5.63%
HZ 902 Hazardous Materials Operations Remedial Training	2	0.50%	2	0.07%	4.00	0.06%
HZ02 Hazmat Awareness and Operations	1	0.25%	7	0.27%	7.00	0.11%
HZ03 MABAS/Regional team training	5	1.25%	10	0.38%	25.00	0.40%
HZ40 Hazmat Equipment and Clothing	3	0.75%	23	0.89%	47.00	0.75%
IR 201 Surface Ice Rescue	3	0.75%	33	1.28%	92.00	1.48%
LA 202 Ladder Cleaning and Maintenance	1	0.25%	7	0.27%	14.00	0.22%
LF 201 Live Fire Engine Ops	3	0.75%	16	0.62%	46.00	0.74%
LIVE Live Fire Training	2	0.50%	13	0.50%	39.00	0.62%
NA 101 Nozzles and Appliances	3	0.75%	32	1.24%	79.00	1.27%
PE 201 Portable Equipment	8	2.01%	54	2.09%	57.50	0.92%
PO 201 Drafting	1	0.25%	17	0.65%	51.00	0.82%
PO 202 Multi Line Pumping Evolution	1	0.25%	5	0.19%	0.00	0.00%
PO 301 Fire Apparatus Engineer	1	0.25%	11	0.42%	0.00	0.00%
PO 901 FAE Exam Remedial Training	3	0.75%	7	0.27%	6.00	0.09%
PUB ED 100 Station and School Tours	2	0.50%	7	0.27%	13.00	0.20%
QDFAE 101 FAE Friction Loss Basics and Field Hydraulics	1	0.25%	7	0.27%	7.00	0.11%
RK 101 Ropes and Knots	3	0.75%	32	1.24%	72.02	1.15%
SA 100 Lockout/ tagout	1	0.25%	2	0.07%	1.00	0.01%



Glenside Fire Protection District

Annual Report Training Analysis by Category

Class Date Between {01/01/2014} And {12/31/2014}

Category	Classes	Pct of Classes	Attendees	Pct of Attendees	Hours	Pct of Hours
SCBA 202 SCBA Emergency Procedure Practical Skills	1	0.25%	1	0.03%	1.00	0.01%
SCBA 203 SCBA Maze Drill	2	0.50%	11	0.42%	22.00	0.35%
SCBA 204 SCBA Consumption Drill	4	1.00%	30	1.16%	84.00	1.35%
SCBA 205 Scott AP75 Introduction	3	0.75%	34	1.31%	70.50	1.13%
SP 101 Winter Operations	1	0.25%	7	0.27%	14.00	0.22%
SP 109 National Weather Service Spotter Training	1	0.25%	3	0.11%	9.00	0.14%
SP 110 Courage To Be Safe	1	0.25%	1	0.03%	4.00	0.06%
SP 111 Proper Recycling and Disposal	2	0.50%	13	0.50%	19.50	0.31%
SCARCE Group						
SP 112 Glendale Heights Fest Operations	4	1.00%	38	1.47%	74.00	1.19%
SP108 Active shooter drill	2	0.50%	5	0.19%	8.00	0.12%
TRT 101 Annual Confined Space / Trench Refresher	3	0.75%	35	1.35%	91.50	1.47%
TRT 121 Rope Rescue Operations	1	0.25%	2	0.07%	80.00	1.28%
UST Underground storage tank training	1	0.25%	2	0.07%	8.00	0.12%
UTIL 100 Responding to Utility Emergencies	4	1.00%	7	0.27%	31.00	0.49%
VF 101 Vehicle Fires	1	0.25%	4	0.15%	2.00	0.03%
Totals	398		2578		6,209.21	



Glenside Fire Protection District

Annual Report Training by Method of Instruction

Class Date Between {01/01/2014} And {12/31/2014}

Method	Classes	Pct of Classes	Attendees	Pct of Attendees	Hours	Pct of Hours
< Not Specified >	66	16.37%	428	16.60%	1,261.36	20.31%
AV Audio-Visual Presentation	38	9.42%	286	11.09%	639.00	10.29%
CL Classroom Lecture	66	16.37%	438	16.98%	944.83	15.21%
CP Classroom/Practical Combination	44	10.91%	326	12.64%	953.00	15.34%
CS Conference/Seminar	1	0.24%	5	0.19%	40.00	0.64%
OL Online presentation	4	0.99%	32	1.24%	36.00	0.57%
PR Practical Evolution	184	45.65%	1063	41.23%	2,335.02	37.60%
Totals	403		2578		6,209.21	



Glenside Fire Protection District

Public Attendance Summary

Date Between {01/01/2014} And {12/31/2014}

Description	# of Events	Public #Adults	Public #Children
Blood Pressure Checks	8	182	0
Book Reading	3	0	120
DuPage County Safety Saturday	1	100	30
Block Parties	2	34	20
Fire Extinguisher Training	1	24	0
Fire Safety	10	660	0
School Fire Drills	10	398	4306
Glendale Heights Fest	5 days	300	125
AHA Heartsaver CPR	12	82	0
AHA Health Care Provider CPR	1	2	0
Health and Safety Fair	1	250	1000
National Night Out	1	20	70
Parades	1	300	150
Park Party	6	156	230
Safety Town	1	0	20
School Tour	6	23	316
Senior Fire Safety Program	5	90	0
3 rd Grade Fire Safety Program	10	16	1090
Station Tour	13	136	88
Christmas Tree Lighting Ceremony	1	40	30
Birthday Parties	1	10	15
Total Public Attendance:		2823	7610



Glenside Fire Protection District

Annual Report Public Attendance Summary

Date Between {01/01/2014} And {12/31/2014}

BDAY Birthday Party

Date	Time	Description	Location	Hrs Stn	Public Attendance	
					#Adults	#Children
07/12/2014	15:30:0	Birthday Party	Other Fire District/Department	1.00 1	10	15
Sub-Total for Activity Code BDAY					10	15

BLOCK Block Party

Date	Time	Description	Location	Hrs Stn	Public Attendance	
					#Adults	#Children
07/19/2014	15:00:0	Block Party		2.00 1	4	5
08/09/2014	15:00:0	Block Party		2.00 1	30	15
Sub-Total for Activity Code BLOCK					34	20

BOOK Book Reading Programs

Date	Time	Description	Location	Hrs Stn	Public Attendance	
					#Adults	#Children
02/27/2014	11:00:0	Book Reading Programs		0.50 1	0	40
02/27/2014	12:00:0	Book Reading Programs		1.00 1	0	40
02/27/2014	13:00:0	Book Reading Programs		0.50 1	0	40
Sub-Total for Activity Code BOOK					0	120

BP Blood Pressure Checks

Date	Time	Description	Location	Hrs Stn	Public Attendance	
					#Adults	#Children
01/07/2014	18:30:0	Blood Pressure Checks		0.50 1	18	0
02/04/2014	18:30:0	Blood Pressure Checks		0.50 1	30	0
05/06/2014	18:30:0	Blood Pressure Checks		0.50 1	30	0
06/03/2014	18:30:0	Blood Pressure Checks	Glenside Fire Protection District	0.50 1	25	0
07/01/2014	18:30:0	Blood Pressure Checks		0.50 1	20	0
08/05/2014	18:30:0	Blood Pressure Checks	On Site	0.50 1	17	0
10/07/2014	18:30:0	Blood Pressure Checks		0.50 1	19	0
11/04/2014	18:30:0	Blood Pressure Checks		0.50 1	23	0



Glenside Fire Protection District

Annual Report Public Attendance Summary

Date Between {01/01/2014} And {12/31/2014}

Sub-Total for Activity Code BP 182 0

DCERN DuPage County Emergency Radio Network Test

Date	Time	Description	Location	Hrs Stn	Public Attendance #Adults #Children
12/04/2014	10:30:0	DuPage County Emergency Radio Network Te		0.50 1	50 200
Sub-Total for Activity Code DCERN					50 200

EXTING Fire Extinguisher Training

Date	Time	Description	Location	Hrs Stn	Public Attendance #Adults #Children
06/12/2014	13:00:0	Fire Extinguisher Training	On Site	3.50 1	24 0
Sub-Total for Activity Code EXTING					24 0

HCP CPR AHA Health Care Provider CPR

Date	Time	Description	Location	Hrs Stn	Public Attendance #Adults #Children
09/13/2014	13:00:0	AHA Health Care Provider CPR		3.50 1	2 0
Sub-Total for Activity Code HCP CPR					2 0

HEALTH Health and Safety Fair

Date	Time	Description	Location	Hrs Stn	Public Attendance #Adults #Children
10/01/2014	17:00:0	Health and Safety Fair		3.00 1	175 250
Sub-Total for Activity Code HEALTH					175 250

HS CPR AHA Heartsaver CPR

Date	Time	Description	Location	Hrs Stn	Public Attendance #Adults #Children
01/22/2014	08:00:0	AHA Heartsaver CPR		4.00 1	7 0
01/29/2014	09:00:0	AHA Heartsaver CPR		3.00 1	9 0



Glenside Fire Protection District

Annual Report Public Attendance Summary

Date Between {01/01/2014} And {12/31/2014}

04/26/2014	08:00:0 AHA Heartsaver CPR		4.00 1	6	0
05/24/2014	08:00:0 AHA Heartsaver CPR		7.50 1	10	0
06/13/2014	08:00:0 AHA Heartsaver CPR		4.00 1	8	0
06/21/2014	08:00:0 AHA Heartsaver CPR		4.00 1	7	0
07/04/2014	08:30:0 AHA Heartsaver CPR		28.00 1	6	0
08/30/2014	09:00:0 AHA Heartsaver CPR		4.00 1	1	0
09/13/2014	08:30:0 AHA Heartsaver CPR		4.00 1	6	0
09/15/2014	18:00:0 AHA Heartsaver CPR	Glenside Fire Protection District	4.00 1	6	0
11/22/2014	08:30:0 AHA Heartsaver CPR		3.00 1	4	0
12/06/2014	08:30:0 AHA Heartsaver CPR		3.00 1	12	0
Sub-Total for Activity Code HS CPR				82	0

PARADE Parade Participation

Date	Time	Description	Location	Hrs Stn	Public Attendance	
					#Adults	#Children
10/18/2014	09:00:0	Parade Participation		2.00 1	300	150
Sub-Total for Activity Code PARADE					300	150

PARK Park Party

Date	Time	Description	Location	Hrs Stn	Public Attendance	
					#Adults	#Children
06/09/2014	17:30:0	Park Party	Glenside Fire Protection District	1.50 1	30	100
06/23/2014	17:30:0	Park Party		1.50 1	6	20
06/26/2014	17:30:0	Park Party	Other Fire District/Departme nt	1.50 1	10	30
07/28/2014	17:30:0	Park Party		1.50 1	50	20
08/04/2014	17:30:0	Park Party		1.50 1	20	30
08/13/2014	17:30:0	Park Party		1.50 1	40	30
Sub-Total for Activity Code PARK					156	230



Glenside Fire Protection District

Annual Report Public Attendance Summary

Date Between {01/01/2014} And {12/31/2014}

SAFETY

Safety Town

Date	Time	Description	Location	Hrs	Stn	Public Attendance	
						#Adults	#Children
07/17/2014	09:00:0	Safety Town		2.00	1	0	20
Sub-Total for Activity Code SAFETY						0	20

SCHOOL

School Tour

Date	Time	Description	Location	Hrs	Stn	Public Attendance	
						#Adults	#Children
02/07/2014	13:00:0	School Tour		1.00	1	10	200
05/29/2014	10:00:0	School Tour		1.00	1	2	20
10/14/2014	09:30:0	School Tour		1.00	1	2	18
10/14/2014	10:30:0	School Tour		1.00	1	2	36
10/14/2014	13:30:0	School Tour		1.00	1	1	12
10/16/2014	10:00:0	School Tour		1.00	1	6	30
Sub-Total for Activity Code SCHOOL						23	316

THIRD

3rd Grade Fire Safety Program

Date	Time	Description	Location	Hrs	Stn	Public Attendance	
						#Adults	#Children
01/07/2014	13:00:0	3rd Grade Fire Safety Program		1.75	1	0	150
02/11/2014	13:00:0	3rd Grade Fire Safety Program		1.75	1	0	150
03/18/2014	13:00:0	3rd Grade Fire Safety Program		1.75	1	0	150
04/15/2014	14:00:0	3rd Grade Fire Safety Program		0.75	1	0	100
04/17/2014	13:00:0	3rd Grade Fire Safety Program		0.75	1	0	100
05/13/2014	13:00:0	3rd Grade Fire Safety Program		1.75	1	8	200
10/21/2014	13:00:0	3rd Grade Fire Safety Program		0.75	1	1	20
10/21/2014	14:00:0	3rd Grade Fire Safety Program		0.75	1	1	20
12/09/2014	13:00:0	3rd Grade Fire Safety Program		1.00	1	3	100



Glenside Fire Protection District

Annual Report Public Attendance Summary

Date Between {01/01/2014} And {12/31/2014}

12/16/2014	13:00:0	3rd Grade Fire Safety Program	1.00	1	3	100
Sub-Total for Activity Code THIRD					16	1090

TOUR		Station Tour		Public Attendance			
Date	Time	Description	Location	Hrs	Stn	#Adults	#Children
01/20/2014	19:00:0	Station Tour		1.00	1	2	3
03/24/2014	18:00:0	Station Tour	Glenside Fire Protection District	1.00	1	2	2
05/06/2014	10:00:0	Station Tour		1.00	1	2	7
05/29/2014	13:15:0	Station Tour	Glenside Fire Protection District	0.75	1	3	7
07/17/2014	13:00:0	Station Tour	Glenside Fire Protection District	1.00	1	7	0
07/23/2014	20:00:0	Station Tour		0.50	1	2	0
10/06/2014	09:30:0	Station Tour		1.00	1	27	4
10/06/2014	10:30:0	Station Tour		1.00	1	28	4
10/06/2014	13:30:0	Station Tour		1.00	1	14	2
10/24/2014	16:00:0	Station Tour	Glenside Fire Protection District	1.00	1	2	12
11/07/2014	18:00:0	Station Tour		1.00	1	6	8
11/19/2014	16:00:0	Station Tour	Glenside Fire Protection District	1.00	1	6	14
12/06/2014	14:00:0	Station Tour		2.00	1	35	25
Sub-Total for Activity Code TOUR						136	88

	Adults	Children
Total Public Attendance	1190	2499



Glenside Fire Protection District

Annual Report Year-to-date Incident Participation

Activity Date Between {01/01/2014} And
{12/31/2014}

Staff Id/Name	Jan	Feb	Mar	Apr	May	Jun	Jul	Aug	Sep	Oct	Nov	Dec	Total	PerCer
1091 Barnes, Christopher	0	0	0	8	53	56	45	67	41	46	46	47	409	17.3
1080 Bojovic, Nicholas M	0	14	7	8	2	5	9	9	4	10	16	0	84	3.5
1074 Buyle, Thomas E.	31	33	24	14	30	7	0	0	0	0	0	0	139	5.8
1010 Cassady, Richard W	37	31	30	28	32	39	22	19	34	20	28	41	361	15.2
1006 Cavanaugh, Chris T	51	23	24	27	40	34	25	31	29	28	24	28	364	15.4
1007 Delillo, Michael A	32	38	18	45	31	23	19	34	14	38	24	9	325	13.7
1056 DiGioia, Louis J.	7	0	6	15	10	20	22	13	13	22	28	7	163	6.9
1087 Drummer, Jonathon	0	0	0	0	0	2	11	24	28	4	0	0	69	2.9
1067 Durbin, Jeremy M.	19	23	15	20	26	32	17	35	13	9	11	32	252	10.6
1086 Errington, Jacob M	25	32	19	30	48	50	37	42	27	25	27	30	392	16.5
1072 Evans, Scot I.	28	28	18	20	29	5	26	36	24	15	26	20	275	11.6
1084 Fernandez, John D	51	39	43	16	0	0	0	0	0	0	0	0	149	6.3
1002 Garon, Robert J	30	19	0	0	0	0	2	1	3	0	3	0	58	2.4
1081 Gomez, Daniel	0	6	6	6	3	12	12	22	4	11	21	9	112	4.7
1088 Gravina, Gregory	0	0	0	0	0	0	11	19	7	20	29	41	127	5.3
1011 Hammond, Jeffery C	51	18	28	16	37	33	20	44	45	22	12	27	353	14.9
1060 Hauser, Brian R	44	21	23	33	31	40	27	23	19	19	39	20	339	14.3
1057 Hinz, Justin N	3	7	8	23	31	52	37	20	21	48	62	68	380	16.0
1050 Jefferson, Richard I	7	5	5	3	9	3	1	4	3	2	1	4	47	1.9
1018 Johnston, Robert D	11	26	20	18	18	16	7	5	16	5	16	9	167	7.0
1004 Lipowski, Stephen D	0	10	41	24	24	18	39	38	17	33	30	32	306	12.9
1029 Lipponeur, Kyle M	75	55	37	35	30	30	21	40	30	31	38	35	457	19.3
1033 Little, Katherine A	41	28	50	53	38	42	58	58	64	39	41	60	572	24.2
1092 Marshall, Ryan	0	0	0	0	0	0	5	5	32	33	61	53	189	8.0
1090 Mezzera, Chad	0	0	1	6	5	3	0	4	0	0	0	0	19	0.8
1028 Novielli, Natalino G	12	15	15	21	25	9	17	7	13	10	7	15	166	7.0
1082 Ostrand, Gregory E	0	15	8	49	63	56	66	65	55	51	51	59	538	22.7
1013 Pacie, Michael J	28	31	22	39	29	56	29	29	29	31	36	15	374	15.8
1014 Pelletier, Jerome A	2	0	0	0	0	0	0	9	1	4	6	2	24	1.0
1046 Pittman, Joan M	0	5	4	2	8	8	1	2	0	2	2	3	37	1.5
1085 Raimondi, Michael P	43	43	35	41	49	45	50	40	23	0	0	0	369	15.6
1089 Reid, James F	13	11	4	7	4	6	5	13	18	8	15	11	115	4.8
1031 Rosentreter, Jon Paul J	0	7	17	5	11	0	0	0	0	0	0	0	40	1.6
1015 Schmidt, Richard G	3	6	5	6	5	0	0	0	0	0	0	0	25	1.0
1034 Shires, Frank C	10	2	2	5	1	3	2	2	5	1	4	2	39	1.6
1003 Siewierski, Walter W	29	21	28	37	33	25	26	37	33	36	34	39	378	16.0
1016 Small, Michael R	14	9	9	9	16	15	9	14	10	5	11	9	130	5.5
1017 Sparks, Donald L	52	39	48	51	25	59	57	64	55	5	0	0	455	19.2



Glenside Fire Protection District

Annual Report Year-to-date Incident Participation

Activity Date Between {01/01/2014} And
{12/31/2014}

Staff Id/Name	Jan	Feb	Mar	Apr	May	Jun	Jul	Aug	Sep	Oct	Nov	Dec	Total	Perce
1062 Spathis, Spencer G	56	37	33	41	70	43	48	49	28	37	35	26	503	21.2
1071 Starkey, Landon P.	29	10	12	18	15	3	8	8	13	10	15	18	159	6.7
1079 Taylor, Joseph R.	23	29	17	27	22	16	24	29	29	25	23	31	295	12.4
1009 Wallin, Christopher T	44	36	36	30	25	37	32	29	32	29	0	32	362	15.3
1000 Wood, Russell J	7	5	5	5	12	4	3	4	4	0	6	6	61	2.5
1023 Zielinski, David G	1	3	2	4	9	9	0	1	2	10	5	2	48	2.0
0 Zz-No, Callbacks	3	1	1	0	4	2	1	0	2	1	6	4	25	1.0

Total Runs by Month

Jan	223	Feb	162	Mar	164	Apr	194	May	210	Jun	201
Jul	207	Aug	228	Sep	205	Oct	183	Nov	196	Dec	189

Grand Total Runs: 2,362

